

# THE CLARION

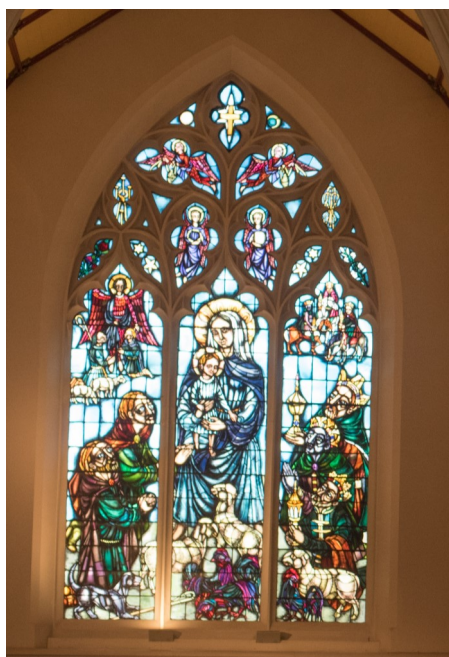
The Magazine of The Parish of St Mary The Boltons

rooted in faith • open in thought • reaching out in service    December 2021 - January 2022

## From the Vicar

I imagine, like me, you are tired of thinking about how the last several months have passed, either in lockdown, or emerging from lockdown, or anticipating having to go back into some version of it, as we watch the Covid statistics ebb and flow. 'We aren't out of the woods yet' we keep hearing. It reminds me of when I was a child going on driving holidays with my family and uttering the plaintive cry, 'Are we there yet?' from the back seat, longing to be anywhere but where I was, not wishing the journey go faster, but that somehow it could be magically over.

Advent, too, has sometimes that air of 'Are we there yet?' We call it a season of waiting, but wherever we look it would appear we *are* there. By Remembrance Sunday I had already spotted my first Christmas tree in a flat window near here and I know that by mid-December it may well have been thrown away. The first adverts for festive food and drink, perfumes, toys and even furniture vie for our attention on television, because 'It's Christmas!' Even in church we will sing 'Hark, the Herald' very



early this year - at the first of our Carol services. No one is asking 'Are we there yet?' The pretence is that we have magically arrived. This is not just a Christmas thing: we see it in so much of our life together, whether it be to do with the end

of the pandemic, the 'fixing' of the crisis in social care, migration, Brexit. *Why aren't we there yet?*

Advent is more than waiting for Christmas, though. The Christian faith has always said that what we are really waiting for is Christ's return in glory, coming in clouds to judge the world, to restore all things to himself, and to reign as King forever. We may not think about it much, but it is right there in our worship week by week: in the Creed, the profession of our common faith; in the declaration of the Mystery of Faith: Christ has died, Christ is risen, Christ will come again; and we assent to it with our loud Amen at the end of the Eucharistic Prayer.

For the early Church, Christ's imminent return was a real expectation, predicted by Jesus himself many times in the gospels. The fact that it did not happen (yet) gave rise to all manner of theological debate about what Jesus really meant. At its heart though, the Second Coming was a promise – not a threat – that the world as they knew it was coming to a close, with the Glorified Christ sitting in the Judgement Seat, and meting out his justice for all. How would they know when it was coming? Jesus even gave them signs to look out for: signs in the sun, the moon, and the stars, distress among nations confused by the roaring of the sea and the waves; wars and rumours of wars; earthquakes in various places, and famines. Christians have seen these signs through the ages and wondered if theirs was the time, just as we see them, and quite properly tremble at the thought of God's justice for us, when it is finally handed down. It certainly feels like the end of the world as we know it. Yet, Jesus constantly reassures his friends, that these things are just the birth pains of what is to come. Not a death knell, but something more creative and life giving: a promise, not a threat.

For Christians, Advent is the season when we think about Jesus' nativity, as well as his promised return. In it we anticipate the celebration of the Incarnation, when God entered the world as a helpless child, as well as remembering the promise that God has not left it to its own devices, to failure and violence and devastation. This year has felt a bit like the end of the world for many people, but the promise of God in Christ is that we are not abandoned or lost, and that when we ask 'Are we there yet?' we can know that the answer is not to wish the journey was over, but to keep our eyes on the love of God who travels with us.



Jenny Welsh, Vicar

Image on p. 1 East Window, St Mary The Boltons  
 Image above Detail from Norman Rockwell's *Going and Coming*  
 in the Norman Rockwell Museum, Stockbridge MS, USA.  
<https://www.saturdayeveningpost.com/2015/07/road-trip/>



## Advent, Christmas and Epiphany

We hope and pray that the Covid situation will not escalate again as it did last December. With that in mind, we will strive to be adaptable during the Advent and Christmas period, but the expectation is that we will be able to maintain good Covid security through the familiar 'hands, face, space' practices we have lived with since the summer.

While our regular Sunday congregations are easily accommodated, we are asking that people who wish to come to the special services book places to attend, either through the Eventbrite link [www.tinyurl.co.uk/SMTBadventandchristmas](http://www.tinyurl.co.uk/SMTBadventandchristmas) or by calling the parish office on 020 7835 1440, and asking for spaces to be set aside for you.

## Advent 2021 Discussion Group: Pastoral Principles for living well together



This course has been designed to help communities address how we disagree well with each other. More information is in the weekly pewsheet. We will have 5 sessions, on Mondays at 7.30pm by Zoom. The final session will be held after Christmas, on 4 January. Each session will end with a short act of worship.

29 November Listening and speaking – addressing IGNORANCE and paying attention to POWER

6 December Talking about confidence and casting out FEAR

13 December Talking about respect and acknowledging PREJUDICE

20 December Talking about openness and speaking into SILENCE

4 January Talking about integrity and admitting HYPOCRISY

[https://us02web.zoom.us/j/88650718883?](https://us02web.zoom.us/j/88650718883?pwd=QkJsTkxvZ0VpY2NlbnZ4cmxhaGRDZz09)

[pwd=QkJsTkxvZ0VpY2NlbnZ4cmxhaGRDZz09](https://us02web.zoom.us/j/88650718883?pwd=QkJsTkxvZ0VpY2NlbnZ4cmxhaGRDZz09)

Meeting ID: 886 5071 8883 Passcode: 678866

0203 481 5237. If you would like to join, please let the Vicar know. If there is sufficient interest, a parallel course will be run on Tuesdays in Advent, finishing on 5 January, in Church.

### Sunday 5 December Earls Court Community Carols in Redcliffe Square Gardens 6pm

For the first time, we are collaborating on a community event with our neighbours at St Luke's and hoping to draw many local people to come and sing their favourite carols outdoors (which is their proper place, historically). Please come along, particularly if you love to sing. We need people to give a good strong lead with the carols. There will be mince pies and mulled wine too.

### Sunday 12 December Carols by candlelight 4.30pm and 7pm

Two Carol Services to choose from: because we will be singing, it is important that we keep distanced. The services will include favourite carols to sing, lovely choral pieces sung by our Choral Scholars, and the familiar Christmas readings. The collections will be for the Charities we are supporting this year. You will need to book ahead.

## **Christmas Eve 24 December**

### **The Crib Service 4pm**

This will be in church again this year. One of the most popular services with both visitors and local families, we hope lots of people will join us to keep Christmas Eve, and help to build the Crib. Booking your family's place is essential.

## **Christmas Eve 24 December**

### **Midnight Mass 11.30pm**

We will be celebrating the first Eucharist of Christmas at 11.30pm. Please book your place in good time as this is one of the most popular services of the year.

## **Christmas Day 25 December**

### **8am Holy Eucharist (BCP)**

This is a traditional service, without music or sermon. It lasts about 25 minutes. There is no need to book your place for this service.

### **Holy Eucharist with music 10.30am**

A family friendly service for Christmas, with music and a sermon. Everyone is welcome, but please book your place so that we can keep everyone as safe as possible.

## **Sunday 26 December St Stephen's Day**

10.30am Holy Eucharist for St Stephen. Preacher and president is the Bishop of London, the Rt Rev Sarah Mullally.

There will not be a service at 8am.

## **Sunday 2 January Epiphany Sunday**

10.30am Holy Eucharist and Procession of the Magi. Join us for this family friendly service in this last Sunday of Christmastide.

## **Used postage stamps for the Leprosy Mission**

Please remember to bring your used postage stamps, with a small margin of envelope still round them, to church to be given to the Leprosy Mission who raise money from them. There is a specially marked collection box at the back of the church.



Image: [www.leprosymission.org.uk](http://www.leprosymission.org.uk)

## **New St Mary's Christmas Cards for Sale**

We were thrilled to launch our new range of Christmas Cards at the beginning of November. The cards are being sold in an assorted pack of 4 images of our church taken by Anita Bryan and Bendix Zumbült. Each pack is £5 or two for £9. Don't forget to buy your cards for friends and family on Sundays, after the main service, or during the week, from the Office. We also have some cards by Ken Howard RA, £3 per pack. All profits on the sale of cards will support our ministry and work here at St Mary's.



## Report of November PCC

At the PCC meeting in November there were some practical decisions made: a budget for 2022 prepared by the Treasurer was reviewed and amended, decisions made about staff salaries, fees for hiring of hall and church, and the level of our contributions to the Diocesan Common Fund, which among other things pays for clergy stipends and pension contributions, for clergy housing, for the central functions of the church, clergy training, and for Bishops and Archdeacons. With costs rising there is a need too for a Stewardship programme next year.

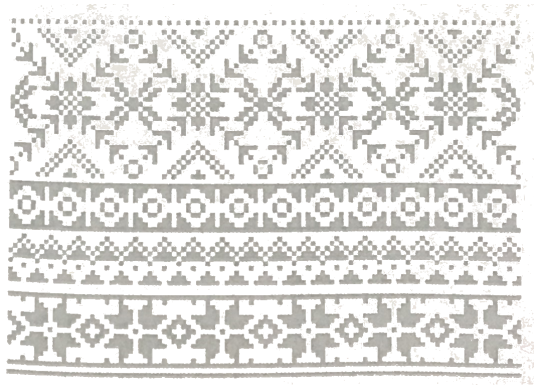
Some discussion involved broader outcomes, for example the PCC decided that this year there will be no Christmas trees inside the church, on the basis that we should be planting trees to mitigate carbon emissions rather than cutting them down. The PCC also welcomed the actions taken by the Fabric Committee to commission the church architect to produce some plans and ideas for improving our carbon footprint, for example, installing insulation in the church hall roof, or solar panels on the roof, or recovering waste heat generated by the telecom equipment in the tower. Other ideas that the PCC encouraged the Vicar to take forward were the possibility of obtaining clergy support, to be funded from the small restricted fund we hold for this purpose, and to investigate with the Church Architect the feasibility of removing the last two rows of pews at the back of the church immediately outside the Parish Office. This would be a huge benefit not only for baptisms but also for social gatherings after other regular services and after weddings and funerals. It would also provide much needed space for baby buggies.

An important step to keep us moving along the path to net zero was the appointment of Keshara Hallock as Climate Change Champion, and active steps are also being taken to find external help with an energy review.

Early in 2022 the PCC plans two offsite meetings. Firstly, we will consider how we can participate more actively in Capital Vision 2030, the long-term Diocesan plan for the Church of England in London, which has as its overall aim a vision of every

Londoner to encounter the love of God in Christ. Secondly, we will meet to overhaul our existing Mission Statement and replace it with a Mission Action Plan.

*Leo Fraser-Mackenzie*



## Fabric Update

*Boilers.* With the heating season now well underway it is good to be able to report that the existing boiler is still working satisfactorily. There has been a delay in obtaining tenders for the replacement boilers, partly caused by an injury sustained by the owner of one of the companies asked to quote, and partly because other companies invited to quote declined to do so.

*Spire and lightning conductor.* A high level inspection of the spire was conducted in early October as part of the 2021

Quinquennial Inspection. On the recommendation of our Inspecting Architect this was carried out by CF & J Brailey Ltd, a lightning, earthing and specialist contractor. Their report disclosed that significant work is needed to



both the lightning protection system and to the stonework on the spire. Estimated cost for the lightning repair work, including a second down conductor on the spire is nearly £13,000. The work to stabilise the stonework on the spire involves

about 20% of the mortar joints on the tower as well as re-bedding the joints around all the angels, and all the necessary scaffolding. The estimated cost is nearly £30,000.

*Other Quinquennial report repairs.* There is other work that requires to be done on the roof and at high level, arising from the Quinquennial Inspection and the most recent Gutter Report and the aim is to get this done at the same time as the work on the spire and lightning conductor as most high level contractors can

usually do the type of work that is needed. This work cannot be done in the winter months as the temperature is too low for mortar to set.

While the scaffolding will remain in place for a few weeks more

while estimates are sought, the actual work will not be undertaken until next spring when the weather is warm enough.

*Roof valley between church and vestry.* In the heavy rain during the first week of October the gutter in the valley between the vestry and church above the St Luke's Chapel overflowed and caused a leak, largely because the arrangements for disposing of the water were not sufficient to deal with the heavy downpour. Among the high level work to be done are improvements in this area so that the anticipated future increased intensity of rainfall arising from climate change will not cause more damage in this area.

*Leo Fraser-Mackenzie*

*Photos: D. Ireton*



## **Approaching Death: Exploring the End of Life**

On Saturday 6 November the church held a discussion day, which focused on talking about and preparing for death. Death can be a frightening and difficult topic and yet, whether our own or the death of someone close to us, is inevitable. The object of this seminar was to provide an informative and constructive approach in a protective environment. The programme was designed to deal with the practicalities of death, legal preparation and the effects of grief.

The first session was entitled *Planning Your Funeral*. This was a well-informed and well presented talk by Jonathan Eyre from Chelsea Funeral Directors. Jonathan covered all aspects of their funeral service, which ranged from the more elaborate funeral in a cemetery to a woodland burial. We covered cost, location and pre-funeral payments. His professional compassion and dedication, with a touch of humour, went down well.

We then focused on *Making Your Intentions Clear*. This was presented by Tom McInerney of Spratt Endicott Solicitors. Tom dealt with Wills, Trusts and Power of Attorney. We covered the preparation and competencies involved in making a Will, the benefits of having a Trust and the proving of a Will. This was an up-to-date and well delivered talk and there were a number of questions from the floor.

After lunch we closed with the final session, which was on *Grief and Bereavement*. This was led by Michael Pownall, Chair of Cruse, Kensington and Chelsea Branch. This was a participant session in which members of the audience were encouraged to share their views on and experiences of death. It was a genuine and thought provoking presentation that brought our programme to a natural conclusion.

There was very positive feedback from the people who attended and there was a special thanks for Anne Swift who had suggested and initiated the programme.

*Ann Mulcare*

## Greetings from 'Down-Under-Wahgunyah'

My wife Jenny and I left London, and St Mary's, at the end of 2009. We now live at 'Medoc', Wahgunyah, an old (by Australian standards) house, with a big garden and seven acre vineyard, near Rutherglen, 400 miles south-west of Sydney. In pre-Covid times we also travelled to Scotland for a few months each year (Edinburgh, where we have an apartment) and so occasionally, when in London, we were able to 'drop in' at St Mary's and catch up with whoever was there. Hopefully, in 2022 'normal service will resume' and we will be able to travel back to the UK once again.

Rutherglen and its surrounds is wine and farming country. We are surrounded by wineries making quality wines (mainly strong reds and 'fortifieds'), many with excellent restaurants attached. There is also sheep and grain farming. The locale has a 'continental' climate (very hot in summer, over 40C is common, and cold but clear blue skies in winter). Very little humidity.

I keep in touch with what is happening at St Mary's via the weekly emailed bulletin and the *Clarion*, and it gives me great pleasure to feel I am still 'connected' with you all in that way. There is comfort in reading about things there that change little – the annual fair, the garden – but also delight to read of the development of music and the singing scholars. The sung Eucharist at St Mary's is something I miss.

In Rutherglen we attend St Stephen's Anglican Church, (see photo) and on most Sundays (only one morning service) we have a congregation of maximum 15 people, of whom we are the youngest, in our late 60s (!) Just like at St Mary's, I am involved with tending the garden, but unlike at St Mary's (where Saturday morning gardening 'back in the day' was a really fun social event, with Elizabeth, Julia, Anne, Audrey and others) here the vicar tends to the flowers (he is quite an expert) and my role is grass cutting. Plenty of that during spring and autumn, but summer tends to be so hot that the grass 'pulls its head in'.

It has been interesting reading about how you have all managed services during Covid, and much the

same has occurred out here. Masks of course, no singing for quite a while, no wine at communion etc. Things are just now easing up and soon we will be back to normal (whatever that is these days). One great improvement brought by Covid, however, is that the no singing rule meant that our hymns were provided via recordings by superb choirs (of the Oxford and Cambridge standard) so we could bask in really excellent singing. Now recordings are being continued and we can sing along with them, such a relief! It will be even better when we do not have to wear our masks.



Jenny and I have been keeping up with Covid news in the UK and Europe, and the onset of winter seems to have stimulated the virus again in your part of the world. We are approaching summer so the incidence of infection is reducing, but no doubt we will be hit by it again next May.

Perhaps next May Jenny and I will be able to travel back to the UK in time for your summer and the attendant delights and if so, we will be back in London visiting St Mary's, renewing friendships and making new ones. St Mary's and its people holds a special place in our hearts from the time of Gerald Beauchamp and Ginny Thomas to the present day with Jenny Welsh, with Dave Ireton, with Bill, Leo, Verena, Margarete, Arthur, Richard, Joanna, Philip, Ann, Katrina, Fiona and many others; it is a strong bond, held fast.

Sending very best wishes and blessings to you all, and if you ever venture out this way, just let me know and you will be made very welcome (paulhauff1@gmail.com).

Paul Hauff

## Announcing our 2022 charities

The Charity Committee is very pleased to announce that the PCC accepted and agreed all our recommendations for the charities for whom St Mary's will be raising money during 2022.

### Learn to Love to Read is

our new principal local charity for whom we will be raising funds in both 2022 and 2023. It provides literacy support to pre-schoolers and primary-age children so that lack of reading skills does not handicap the child's development and lead to social disadvantage in later life. The charity generally partners with primary schools whose catchment areas include a high proportion of Pupil Premium (a grant given by the government to schools in England to decrease the attainment gap for the most disadvantaged children) and/or EAL families (for whom English is an additional language), with schools identifying the children who need additional help. It works with Wandsworth schools, teachers and the families they serve. [www.learn2love2read.org.uk](http://www.learn2love2read.org.uk)

learn to

love to

read

**Beacon House** is the location for a service provided by Evolve, a charity that started out as a YMCA initiative that included Earls Court YMCA. Beacon House itself is on



our doorstep as it is located in Bina Gardens. It provides somewhere for homeless people to live as well as to gain skills, leading to employment and ultimately thrive independently. The house consists of 16 self-contained flats plus a communal area, garden, and a skills room. It helps 16 single homeless young people from 16 years of age who have medium to high support needs and require access to staff 24 hours a day. Residents are referred by the Royal Borough of Kensington and Chelsea's Social Inclusion, Independent Support and Children and Families teams. The skills room needs additional equipment. Our support will enable the purchase/upgrade of computers and other office-type related equipment that would help enable residents prepare for work and independent living. [www.evolvehousing.org.uk/understand-our-work/supported-housing/young-people/beacon-house/?showall](http://www.evolvehousing.org.uk/understand-our-work/supported-housing/young-people/beacon-house/?showall)

**Paul's Cancer Support** is also a one year local charity. It is based in and provides help from its premises in Battersea. Its mission is to provide holistic, individual and compassionate cancer support to anyone in



its local area who needs it. This will include people whose diagnosis of cancer will be the start of a journey and others who experience an early and perhaps cruel death. The charity mainly works in Wandsworth, but also in Kensington & Chelsea; we are restricting our donation to its work in these areas. A principle underlying all its work is that each person touched by cancer is an individual with their own uniqueness, and with their own set of circumstances, who will respond in their own particular way to the challenge of a life-threatening illness.

We believe that selecting this charity is an expression of our support for and responsibility to our local community as it is now defined. [www.pauls.org.uk](http://www.pauls.org.uk)

**Lyra in Africa** is our one-year overseas charity. Its mission is to give girls in rural Tanzania the opportunity to complete their secondary studies and increase their access to high-quality secondary education and equal economic opportunities. Secondary schools can serve villages up to 30 km apart, so Lyra fulfills its mission mainly by building hostels so that girls from a wide rural catchment area can attend schools safely and complete their education. The hostels accommodate around 1,000 girls annually. The charity subsidises marginalised and poor girls who would otherwise not be able to stay in a hostel. Lyra has a mainstream Christian ethic and was founded and is run by Christians. [lyrainafrika.org](http://lyrainafrika.org)



**USPG<sup>+</sup>** During 2022 we shall continue to support our USPG Partner in Mission with the Anglican Council in Malawi for its second year.

As always, the Committee greatly appreciates all the suggestions we receive for potential beneficiaries. If a charity you put forward has not been selected it will be for a good reason. If you would like to know why, Anthony Williams will be happy to explain.  
*Anthony Williams on behalf of the Charity Committee*



## Book review

*Edgewise? Experiences of some Anglican lay women*  
Hannah Ward and Jennifer Wild, eds  
2021, DLT

This book contains a collection of some nine women's statements of where they are 'at' physically, emotionally and spiritually. They had met as a group for many years and the time was right to write their 'stories.' The chapters are simply outlining what they had experienced as Anglican women. There is no analysis of their written comment; their writings simply stand there. Their common experiences show a wide variety of what matters to them now, and perhaps how they got there. They are certainly no longer card-carrying Anglicans, but they do not explain why or what has changed. Their comments simply stand for what they know is different from when they set out on life and careers. There are no indications if the women did right or wrong, were more committed to the church and its dogmas or not, or if they are better now than before they embarked on this particular journey.

Surely all of us are on some such journey, be this a 'religious' journey or any other. We can learn from the women's experiences, or be challenged by their courage to write about them, and start on our own journey or perhaps feel encouraged by where we have already travelled. For sure, it may not be where we may have started from or set out to achieve.

*Verena Tschudin*

## Silent Prayer in Church

The Silent Prayer meetings continue in church on the second Wednesday of each month, 11am to 12 noon.

The next dates are:

8 December

12 January

9 February

A group of people who gather sit together in silence for some 40 minutes. No spoken prayers are said, just the tinkle of a bell at the beginning and end and half-way through. Being silent for a little while is an invitation to listen to what is happening inside. In our liturgies we are used to address God in praise and song, but listening to the inner 'still small voice' may take some more attention. Doing it with other people forms a creative power that can be felt and can be powerful. Letting go of the need to be busy even for a little time is not only relaxing, but will eventually lead us to the truth of our selves that seems to be the big task of all our lives.

There is no need to join anything, book or apologise; just come if and when you can.



As a proud supporter of **GLASSDOOR**

PLEASE JOIN US AFTER THE CONCERT FOR DRINKS AND MINCE PIES

RSVP by Friday 3 December, to [christmas@susanmetcalfe.com](mailto:christmas@susanmetcalfe.com)



## Services and Events at St Mary's

We fully expect to be able to worship together as normal during the Christmas period. The COVID measures in place are such that we continue to practise social distancing, encourage the wearing of face coverings and use the NHS Track and Trace app. We also encourage taking a Lateral Flow Test for COVID, and staying at home if you are feeling poorly.

Booking a place will be essential for Carol Services on 12 December and services on Christmas Eve and Christmas Day, using the link [www.tinyurl.co.uk/SMTBadventandchristmas](http://www.tinyurl.co.uk/SMTBadventandchristmas). You can also call the Office on 020 7835 1440 to book.

### Sunday 28 November Advent 1

8am Holy Eucharist (BCP)  
10.30am Holy Eucharist  
Readings: 1 Thessalonians 3.9-end  
Luke 21.25-36  
12 noon Last Sunday Recital  
Louisa Kataria, *saxophone*

### Monday 29 November

7.30pm Advent Group (Zoom)  
(see the link elsewhere in this issue)

### Wednesday 1 December

7pm Charity Carol Concert for Friends of Chelsea and Westminster Hospital  
(tickets available from [www.cwfriends.eventbrite.com](http://www.cwfriends.eventbrite.com), or phone 0203 315 8825)

### Friday 3 December

10am – 1pm Second Half Club



### Sunday 5 December Advent 2

8am Holy Eucharist (BCP)  
10.30am All Age Eucharist for Advent with Come and Sing Choir  
Readings: Malachi 3.1-4  
Luke 3.1-6  
The service will be followed by refreshments and the Grand Advent Raffle in the hall, raising funds for Glass Door Homelessness Charity. Tickets on sale in church and after services  
12.30pm Baptism of Basil Palmer  
6pm Community Carols  
in Redcliffe Square Gardens

### Monday 6 December

7.30pm Advent Group (Zoom)

### Wednesday 8 December

11am Silent Prayer  
6pm Susan Metcalfe Christmas Carol Service

### Friday 10 December

10am – 1pm Second Half Club

### Sunday 12 December Advent 3

8am Holy Eucharist (BCP)  
10.30am Holy Eucharist  
Readings: Zephaniah 3.14-20  
Luke 3.7-18  
4.30pm Carols by Candlelight  
Free entrance by ticket  
7pm Carols by Candlelight  
Free entrance by ticket

### Monday 13 December

7.30pm Advent Group (Zoom)

### Friday 17 December

10am - 1pm Second Half Club; last of term

**Sunday 19 December Advent 4**

8am Holy Eucharist (BCP)  
 10.30am Holy Eucharist  
 Readings: Micah 5.2-5a  
 Luke 1.39-55

**Monday 20 December**

7.30pm Advent Group (Zoom)

**Friday 24 December Christmas Eve**

4pm Crib service for families  
 Free entrance by ticket  
 11.30pm Midnight Mass:  
 the first Eucharist of Christmas  
 Free entrance by ticket

**Saturday 25 December Christmas Day**

8am Holy Eucharist (BCP)  
 10.30am Holy Eucharist with music  
 Free entrance by ticket  
 Readings: Isaiah 9.2-7  
 Luke 2.1-20

**Sunday 26 December Feast of St Stephen**

10.30am Holy Eucharist  
 The President and Preacher will be  
 The Bishop of London, the Rt Rev  
 and Rt Hon Dame Sarah Mullally  
 Readings: Acts 7.51-end  
 Matthew 10.17-22  
 There will be no service at 8am

**Monday 27 - Friday 31 December**

CHURCH CLOSED

**January 2022****Sunday 2 January Epiphany**

8am Holy Eucharist (BCP)  
 10.30am Holy Eucharist  
 and procession of the Magi  
 Readings: Isaiah 60.1-6  
 Matthew 2.1-12

**Monday 3 January**

New Year Bank Holiday  
 CHURCH CLOSED

**Tuesday 4 January**

7.30pm Advent Course conclusion (Zoom)

**Sunday 9 January Baptism of Christ**

8am Holy Eucharist (BCP)  
 10.30am Holy Eucharist  
 and renewal of baptism promises  
 Readings: Isaiah 43.1-7  
 Luke 3.15 -17, 21-22

**Wednesday 12 January**

11am Silent Prayer

**Friday 14 January**

10am – 1pm Second Half Club resumes

**Sunday 16 January Epiphany 2**

8am Holy Eucharist (BCP)  
 10.30am Holy Eucharist  
 Readings: 1 Corinthians 12.1-11  
 John 2.1-11

**Wednesday 19 January**

7pm PCC (in the church hall)

**Friday 21 January**

10am – 1pm Second Half Club

**Sunday 23 January Epiphany 3**

8am Holy Eucharist (BCP)  
 10.30am Holy Eucharist  
 Readings: 1 Corinthians 12.12-31a  
 Luke 4.14-21

**Friday 28 January**

10am – 1pm Second Half Club

**Sunday 30 January****Presentation of Christ in the Temple****Candlemas**

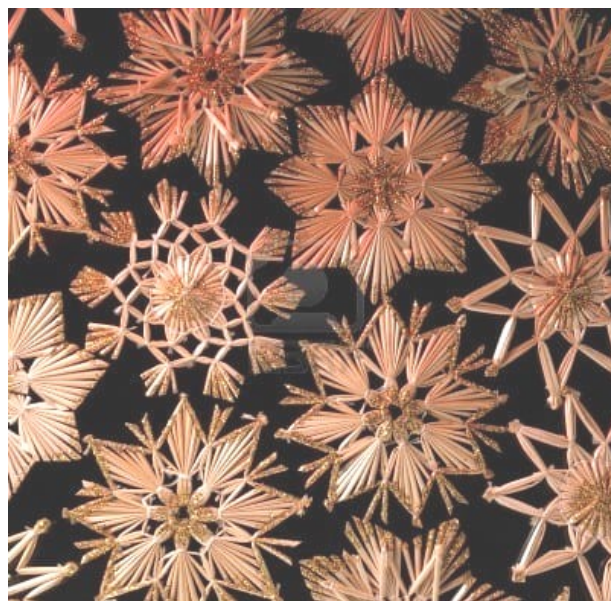
8am Holy Eucharist (BCP)  
 10.30am All Age Eucharist for Candlemas  
 Readings: Malachi 3.1-5  
 Luke 2.22-40

## Year's Mind December—January

Randoll Coate  
Stephen Long  
Ethel Doris  
Angela Raynor  
Sybil Sassoon  
Richard Waterbury  
Georgia Pemberton  
Margaret Payne  
David Bowden  
Alexandra English  
Antony Gowan  
Patricia Coghill  
Charles Dwight  
Fatima Andrade-Thomson  
Joyce Mundy  
David Lidderdale  
Victoire Ridsdale  
Gerda Turner  
James McGowan  
Fiona Brown  
George Bosworth  
Jacqueline Lewis  
Edward Sloane  
Doris Sloane  
Charles Foster-Taylor  
Georgina Davson  
May Irvine  
Ethel Sutcliffe  
Bea Spicer  
Basil Robinson  
Joan Rawle  
Albert Beauchamp  
Wendy Wood  
Keith Kerry  
Timothy Pringle  
Elizabeth Graham

David Tann  
Austice Goodman  
Bill Kirkpatrick  
Julian Beck  
Tilly Halliwell  
Mary Millbourn  
Dorian Chinner  
Charles Sprawson  
Anthony Sheil

Clarissa Morse  
Frances Perry  
Gilbert Reuss  
Arthur Tait  
Noel Patrick  
Leonard Waight  
Anita Dowbiggin  
Emily Greenland  
Francis Mundy  
Margot Macpherson  
Francis Spicer  
Anthony Glyn  
Alexander Fleming  
Anthea Smith  
Harry Dwight  
Ffreebairn Simpson  
Robert Collins  
Violet Berry  
Joan Ommanney  
Jane Hawker  
Ellen Payne



German straw star decorations  
<https://thestrashop.com/straw-stars/>

**Parish Office**

St. Mary's Church House  
The Boltons, SW10 9TB  
www.stmarytheboltons.org.uk  
020 7835 1440

**Vicar**

Reverend Jenny Welsh  
vicar@stmarytheboltons.org.uk  
020 7835 1440 and 07864 807959  
(Day off Thursday)

**Parish Manager**

Jane Ellard  
office@stmarytheboltons.org.uk  
020 7835 1440

**Verger/Caretaker**

David Ireton  
020 7244 8998  
07881 865 386  
(Day off Wednesday)

**Churchwardens**

Antony Bryceson 020 7937 1055  
Edward Quinton 020 7373 6094

**Director of Music**

John Ward  
boltonsmusic@gmail.com

**St Mary's Church Bank Details**

Account name:  
PCC of St Mary with St Peter & St Jude  
Account number: 80692190  
Sort code: 20-80-14

**Assistant Treasurer**

Bill Gallagher 020 7384 3246

**Electoral Roll Officer**

Fiona Parsons  
er@stmarytheboltons.org.uk  
or call the Parish Office

**Gift Aid Secretary**

Philip Bedford Smith  
GiftAid1@stmarytheboltons.org.uk

**The Clarion Editor**

Verena Tschudin 020 7351 1263  
v.tschudin@btinternet.com

**Reading at St Cuthbert's and St Matthias' School**

Sheila Gibbs 020 8788 9744

**Social Secretary**

Margarete Geier 020 7373 1639

**Sunday School**

children@stmarytheboltons.org.uk

**Safeguarding at St Mary's**

The St Mary The Boltons' Safeguarding Officer is Clair Gordon. Her role is to help us to safeguard and promote the welfare of children and adults at risk. She is the first point of contact for children, adults at risk and other members of the congregation regarding suspicions of abuse and other safeguarding concerns. If you have any concerns, please contact Clair on 07850 944 834. In the event of Clair not being available, Kelly Webb may be contacted at 07971 552 014. Alternatively, speak to Sheryl Kent, Diocesan Safeguarding Adviser: 020 7932 1224 Churches' Child Protection Advisory Service (CCPAS) helpline: 0845 120 4550 Family Lives: 0808 800 222 (Previously Parentline) Childline: 0800 1111.

**Children's Champion**

The St Mary The Boltons' Children's Champions are Chris and Katie Fowkes. Their role is to ensure that the voices and needs of the children and young people are heard and reflected in parish life. They can be contacted via: children@stmarytheboltons.org.uk.



**There is a Hearing Loop in operation at St Mary The Boltons**

**Contributions for the February Clarion should be sent to the Parish Office by 24 January, please.**

The PCC of St Mary with St Peter & St Jude, West Brompton is a Registered Charity, No 1133073